

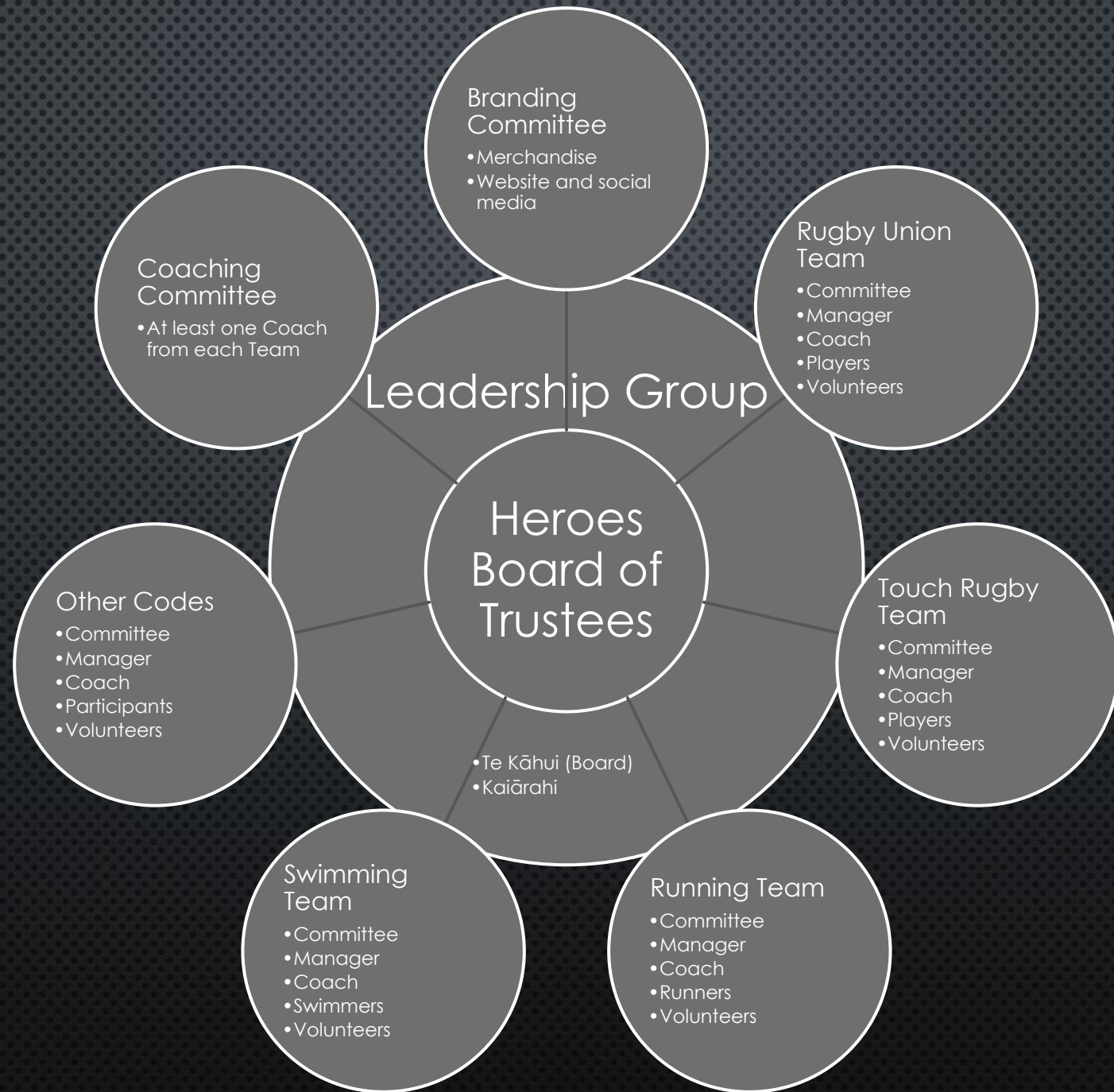
CHRISTCHURCH HEROES

LGBTI+ INCLUSIVE SPORTS TEAMS

ORGANISATIONAL STRUCTURE

THE CHRISTCHURCH HEROES MEMBERSHIP COMPRISES

- ALL MEMBERS OF THE BOARD OF TRUSTEES (TE KĀHUI)
- ALL MEMBERS OF THE LEADERSHIP GROUP (TE MANA WHAKAHAERE)
- ALL COACHES
- ALL PLAYERS/PARTICIPANTS
- ALL OFFICIALLY RECOGNISED VOLUNTEERS



BOARD OF TRUSTEES (TE KĀHUI O TE ŌTAUTAHI TUAHANGATA)

- CHAIRPERSON (MANUKURA)
 - SECRETARY & TREASURER (MAY BE THE SAME PERSON)
 - ADDITIONAL OFFICERS (KAITIAKI) MAY BE ELECTED - A MINIMUM OF 3 & MAXIMUM OF 7
-
- ALL OFFICERS SHALL BE ELECTED FROM THE RAINBOW COMMUNITY OF CANTERBURY, TO A 3-YEAR TERM AND MAY BE RE-ELECTED AT THE END OF EACH TERM

LEADERSHIP GROUP (TE MANA WHAKAHAERE)

- THE BOARD OF TRUSTEES (TE KĀHUI KAITIAKI) ARE AUTOMATICALLY INCLUDED
- ADDITIONAL MEMBERS (KAIĀRAHI) AS APPOINTED BY THE BOARD FOLLOWING OPEN INVITATION TO ORGANISATIONS SUPPORTING & MEMBERS OF THE WIDER RAINBOW COMMUNITY OF CANTERBURY

- A MAXIMUM OF 10 KAIĀRAHI

EACH TEAM'S MEMBERSHIP COMPRISES

- ELECTED COMMITTEE (CHAIR, DEPUTY CHAIR, TREASURER & SECRETARY, PLUS OTHERS TO A MAXIMUM OF 10 OFFICERS - ALL OF WHOM MUST BE FROM THAT TEAM)
 - MANAGEMENT — APPOINTED BY THE COMMITTEE
 - COACHES — APPOINTED BY THE COMMITTEE
 - PARTICIPANTS (PLAYERS)
 - VOLUNTEERS
-
- A MINIMUM OF 10 MEMBERS